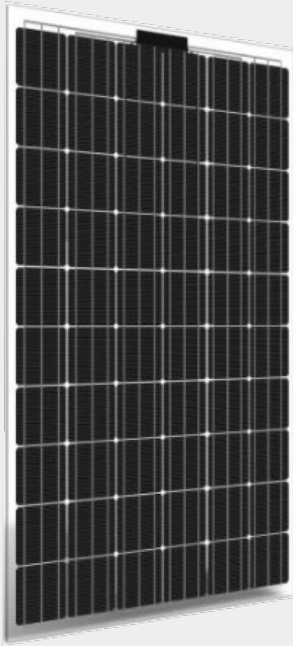


Almaden®



60 Cells

Monocrystalline

2mm+2mm

Thickness

19.6kg

Weight

17%

Max efficiency

265-280W

Power output

Company profile

Changzhou Almaden Co.,Ltd. is the world's largest producer of anti-reflective coated (ARC) glass and ultrathin physically tempered glass, we are leading the way in solar glass industry. Founded in 2006 and thanks to our 1600 employees, we have 40M sqm annual capacity of ARC glass and 1.5GW annual capacity of glass-glass Solar Modules. We are a strong and bankable partner for your solar projects

SEAM60 Glass-Glass module

The most reliable solar module

Highly reliable and efficient

Micro-crack free. PID free. Fire class A. Super weather resistance. 100% defect free EL Double inspection. Frameless design with AR for self-cleaning. 50+ year lifetime.

Our technology & value

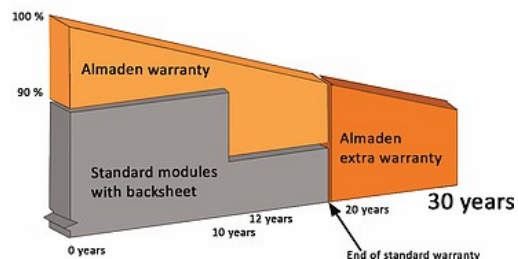
Unique air cushion glass tempering, **extremely flat 2mm** tempered glass. Better cooling, 1% more efficient than 2.5mm glass. More ecological for the production and transportation.

Our own technology of **POE** lamination, 30 times more resistant than EVA.

Our own **anti-reflective coating** technology of glass, with self-cleaning, improve the efficiency by 4.5%.

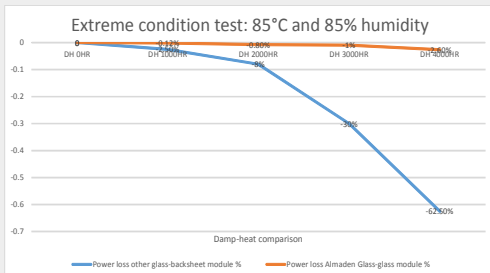
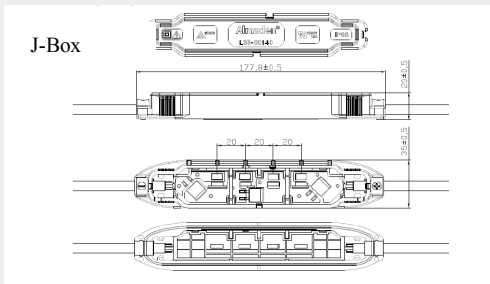
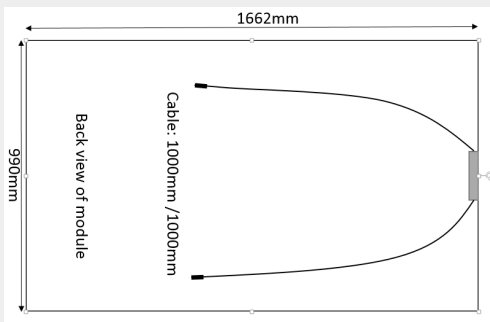
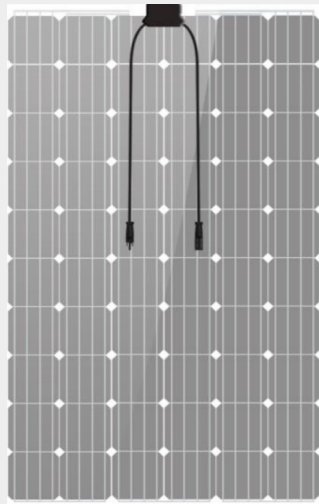
Extended warranty

Almaden's 30 year power output warranty



Certifications





Almaden POE vs EVA vs PVB

Water vapor transmission rates

Almaden® Polyolefin Encapsulant Film (POE)	3.3
EVA films	34
PVB films	84

All WVTR units are in g/(m²/24 hrs) measured at 100% RH, average of two specimens.

Electrical specification

Model	SEAM60-265	SEAM60-270	SEAM60-275	SEAM60-280
Rated power(Pmpp)	265W	270W	275W	280W
Rated current(Imp)	8.66A	8.79A	8.91A	9.04A
Rated voltage(Vmpp)	30.61V	30.73V	30.85V	30.97V
Short circuit current(Isc)	9.26A	9.38A	9.52A	9.65A
Open circuit voltage(Voc)	38.17V	38.38V	38.51V	38.6V

Mechanical specification

Cell type	Mono-crystalline
Cell dimension	156.75mm x 156.75mm
Module dimension	1662mm x 990mm x 5mm (J-box not included)
Weight	19.6kg
Front glass	Almaden 2mm heat-strengthened AR glass.
Back glass	Almaden 2mm heat-strengthened glass / ceramic coated glass for white or black module
Frame	Frameless design for easy self-cleaning
J-Box	Almaden, IP68. Check J-Box datasheet for more details
Cables	1000mm
Connector	MC4
Lamination	Almaden POE films. Check POE datasheet for more details

Temperature coefficient

Nominal operating cell temperature	46±2 °C
Temperature coefficient of Isc	0.08 %/°C
Temperature coefficient of Voc	-0.38 %/°C
Temperature coefficient of Pmpp	-0.49 %/°C

Limit

Operational temperature	-40~+85 °C
Maximum static load	5400 Pa
Maximum wind load	2400 Pa
Maximum system voltage	IEC:1000V(DC) UL:600V(DC)
Maximum series fuse rating	15A

Warranty

10 year product warranty on workmanship & materials

30 year linear power output warranty

Insured by Yingda Taihe property Co., Ltd.

Insured by Solarif Risk Management

Package configuration

Modules per box: 38 pieces

Modules per 40' container: 988 pieces

TUV packaging and transportation test

More options

White ceramic coated back glass

Black ceramic coated back glass

Framed module, size: 1668 x 996 x 30 mm, Frame color: black or aluminum

Contact of Almaden Swiss

Almaden Swiss Office : Route de Sainte-Croix 7, 1445 Vuiteboeuf

Web : www.almaden.ch, (Headquarter in China) www.czamd.com

Email : almaden.swiss@czamd.com

Tel : +41 24 459 1009

Please contact us if you need more detailed information of our data, production, etc. The efficiency of our modules is constantly being improved. Specifications included in this datasheet are subject to change without notice.